

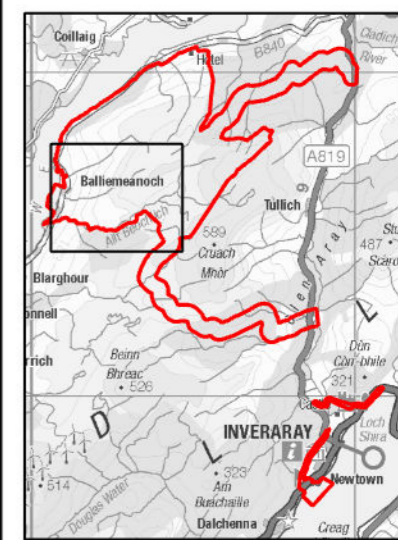
# AECOM

**PROJECT**  
**BALLIEMEANOCH**  
**PUMPED STORAGE**  
**HYDRO**

**CLIENT**  
 ILI (Borders PSH) Ltd.

**CONSULTANT**  
 AECOM Limited  
 177 Bothwell Street  
 Glasgow, B2 7ER  
 T +44(0)141 202 0500  
 www.aecom.com

- LEGEND**
- Development Boundary
  - Above Ground Infrastructure
  - Below Ground Infrastructure
  - Transect 1 (2019)
  - X Static detector location
- Species**
- X Brown long-eared bat
  - X *Myotis* sp.
  - X *Myotis* sp. (likely Daubenton's bat)
  - X *Myotis* sp. (likely Natterer's bat)
  - X *Pipistrelle* sp.
  - X Common pipistrelle
  - X Soprano pipistrelle
  - + *Pipistrelle* sp. social call



**NOTES**  
 Reproduced from Ordnance Survey digital map data © Crown copyright 2023. All rights reserved. Licence number 0100031673..

© 2024 Microsoft Corporation © 2024 Maxar ©CNES (2024) Distribution Airbus DS.

**ISSUE PURPOSE**

DRAFT

**PROJECT NUMBER**

60570241

**FIGURE TITLE**

Bat Transect Survey Results

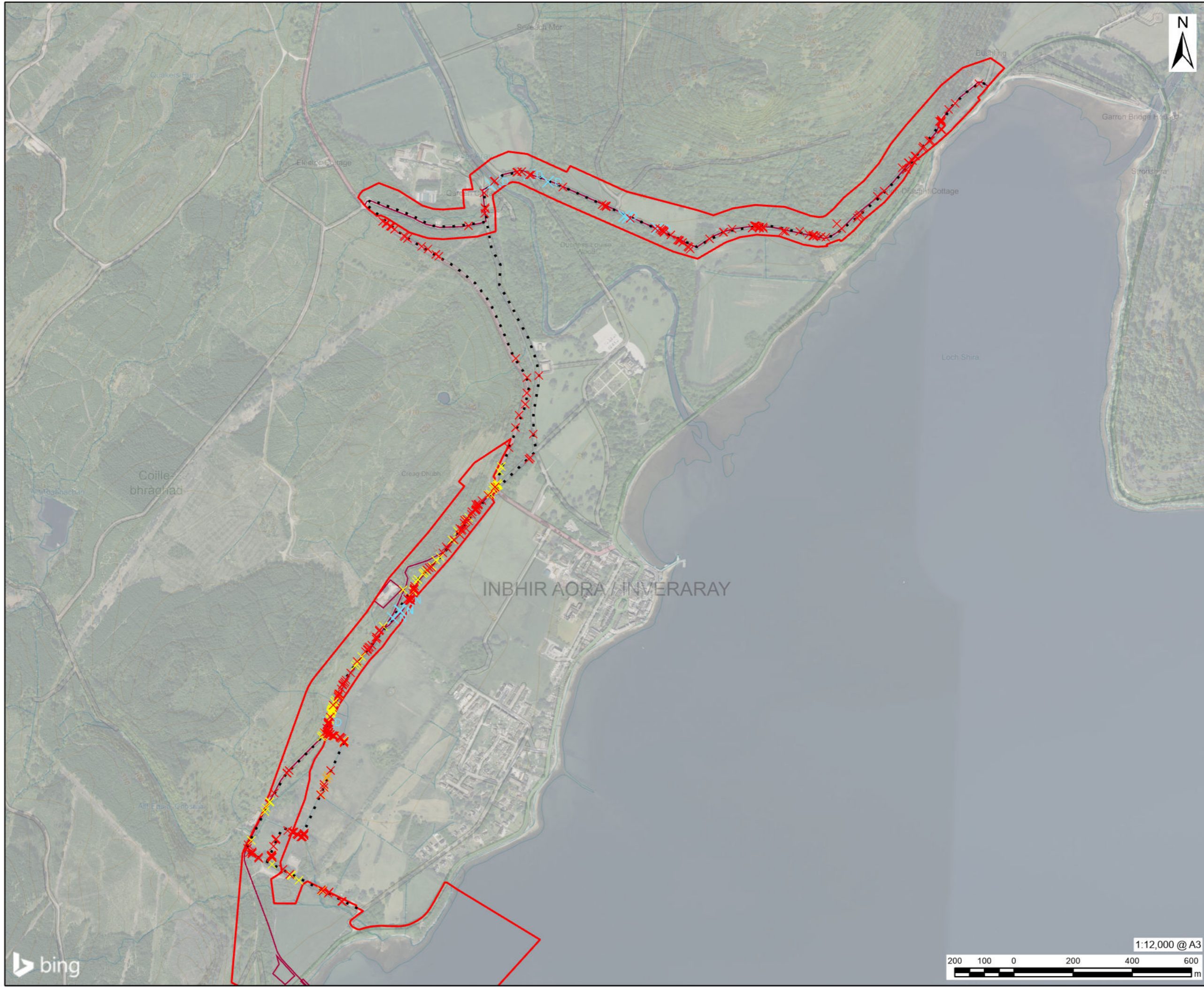
**FIGURE NUMBER**

Figure 6.13 (Sheet 1 of 2)



This drawing has been prepared for the use of AECOM's client. It may not be used, modified, reproduced or relied upon by third parties, except as agreed by AECOM or as required by law. AECOM accepts no responsibility, and denies any liability whatsoever, to any party that uses or relies on this drawing without AECOM's express written consent. Do not scale this document. All measurements must be obtained from the stated dimensions.



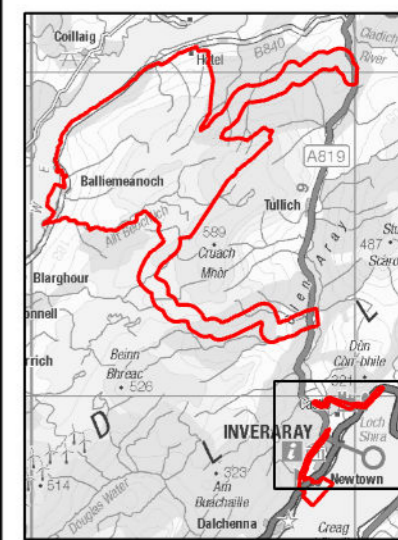


**AECOM**

**PROJECT**  
**BALLIEMEANOCH**  
**PUMPED STORAGE**  
**HYDRO**  
**CLIENT**  
**ILI (Borders PSH) Ltd.**

**CONSULTANT**  
 AECOM Limited  
 177 Bothwell Street  
 Glasgow, B2 7ER  
 T +44(0)141 202 0500  
 www.aecom.com

- LEGEND**
- Development Boundary
  - Above Ground Infrastructure
  - Below Ground Infrastructure
  - Transect 2 (2021)
- Species**
- X *Myotis sp.*
  - XD *Myotis sp.* (likely Daubenton's bat)
  - XN *Myotis sp.* (likely Natterer's bat)
  - X *Pipistrelle sp.*
  - X Common pipistrelle
  - X Soprano pipistrelle



**NOTES**

Reproduced from Ordnance Survey digital map data © Crown copyright 2023. All rights reserved. Licence number 0100031673..

© 2024 Microsoft Corporation © 2024 Maxar ©CNES (2024) Distribution Airbus DS.

**ISSUE PURPOSE**  
 DRAFT

**PROJECT NUMBER**  
 60570241

**FIGURE TITLE**  
 Bat Transect Survey Results

**FIGURE NUMBER**  
 Figure 6.13 (Sheet 2 of 2)



This drawing has been prepared for the use of AECOM's client. It may not be used, modified, reproduced or relied upon by third parties, except as agreed by AECOM or as required by law. AECOM accepts no responsibility, and denies any liability whatsoever, to any party that uses or relies on this drawing without AECOM's express written consent. Do not scale this document. All measurements must be obtained from the stated dimensions.